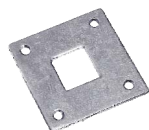
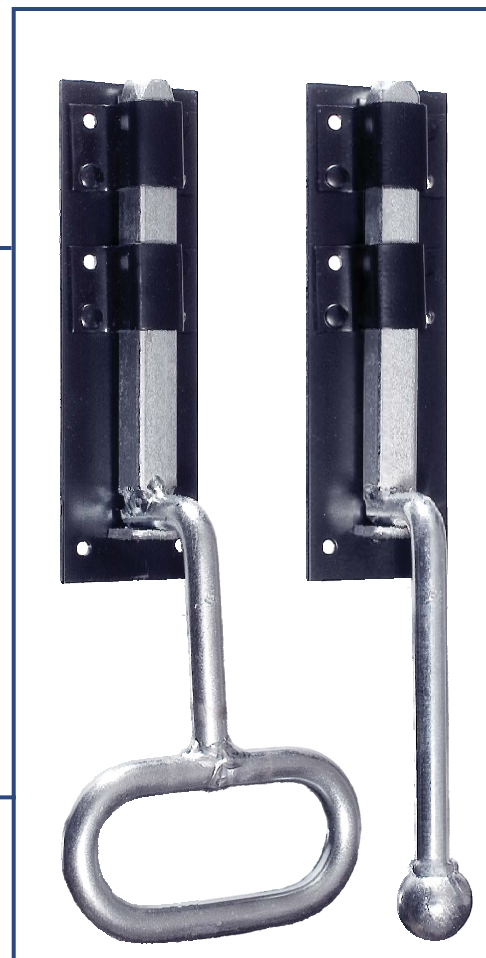


# PRODUCT DATA SHEET

## MONKEY TAIL & BOW HANDLE BOLTS

- British Made
- Galvanised Shoot
- Powder Coated Backplate

Product Code	Product	Overall Length of Bolt Shoot		Size of Square Bolt Shoot (mm)	Screw Holes per Bolt	Screw Size Round Head (No.)
		(in)	(mm)			
10GD60MTBA	Monkey Tail Bolt	12	305	16	6	10
10GD60MTBB	Monkey Tail Bolt	18	457	16	6	10
10GD60MTBC	Monkey Tail Bolt	24	610	16	6	10
10GD60MTBD	Monkey Tail Bolt	30	762	16	6	10
10GD60MTBE	Monkey Tail Bolt	36	914	16	6	10
10GD60BHBA	Bow Handle Bolt	12	305	16	6	10
10GD60BHBB	Bow Handle Bolt	15	381	16	6	10
10GD60BHBC	Bow Handle Bolt	18	457	16	6	10
10GD60BHBD	Bow Handle Bolt	24	610	16	6	10



**10GD60MTBP**  
Bolt Plate



**10GD60MTBT**  
Bolt Staple



**10GD60MTBS**  
Bolt Socket



### International Door Controls Ltd

Unit 23, Timmis Road  
Lye, Stourbridge  
West Midlands DY9 7BQ

Tel: 01384 893333 Fax: 01384 894837  
Email: [info@int-door-controls.com](mailto:info@int-door-controls.com)

PRODUCT:

**MONKEY TAIL AND BOW HANDLE BOLTS**

CODE:

**10GD60MTBx/10GD60BHBx**